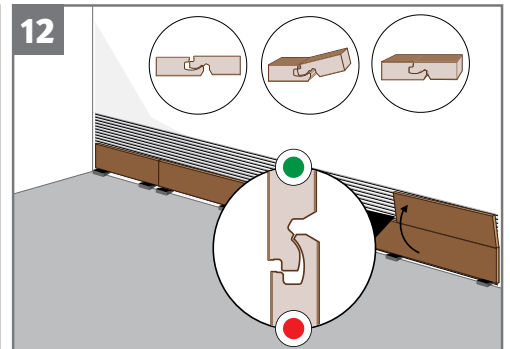
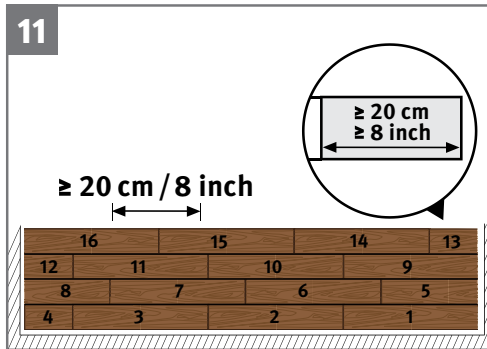
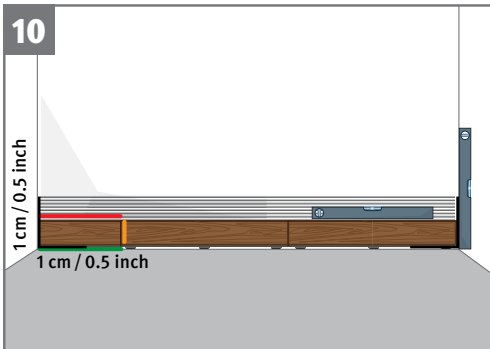
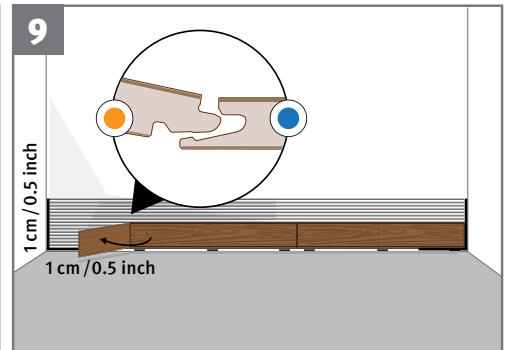
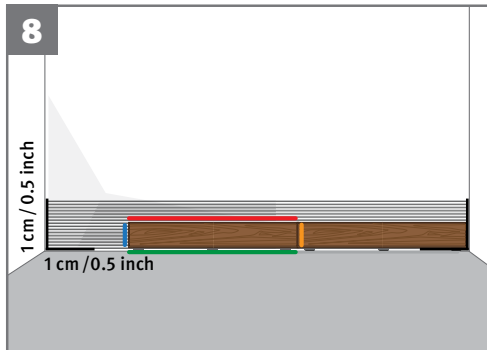
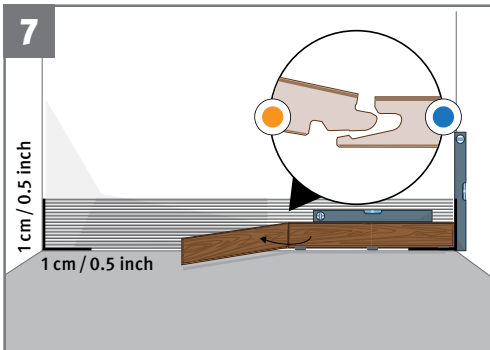
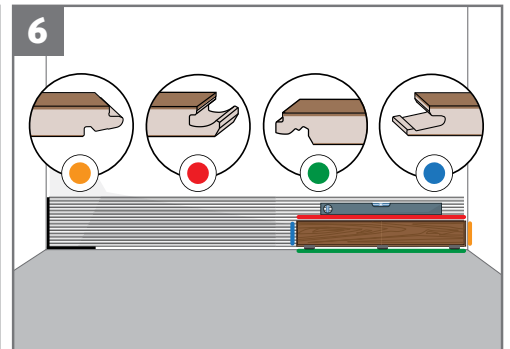
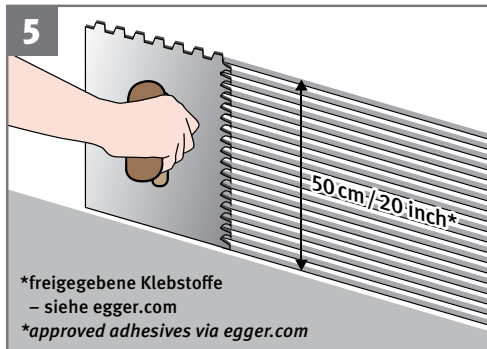
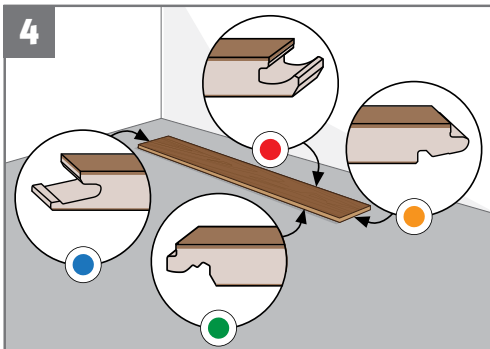
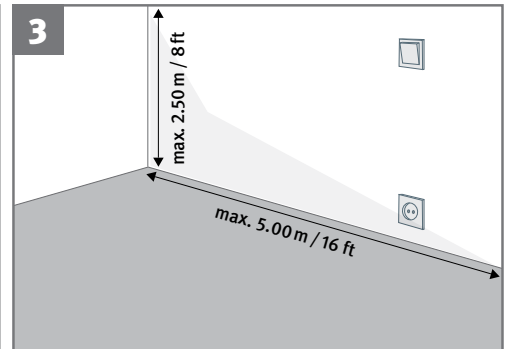
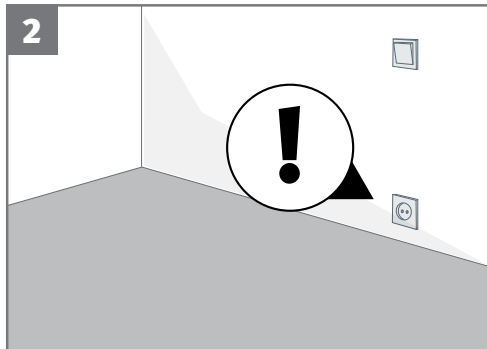
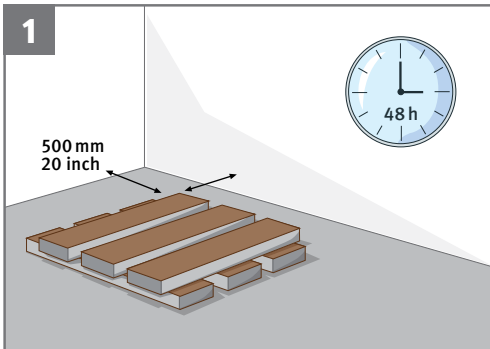
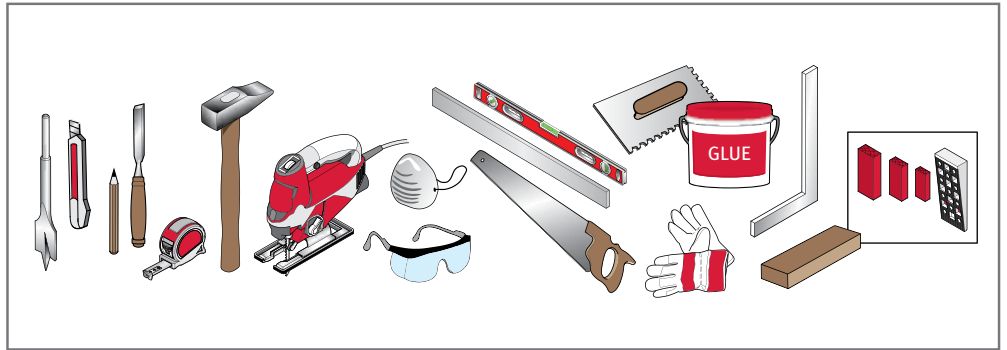
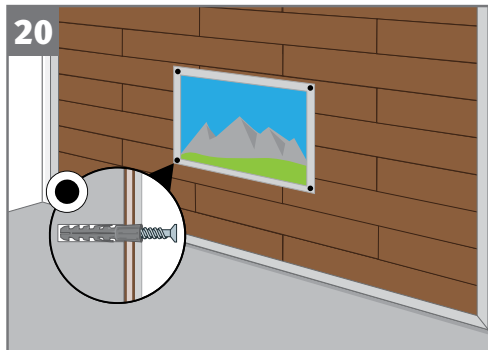
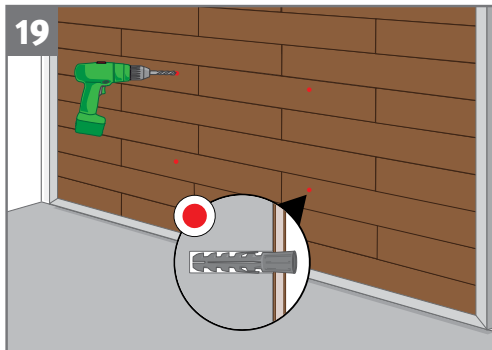
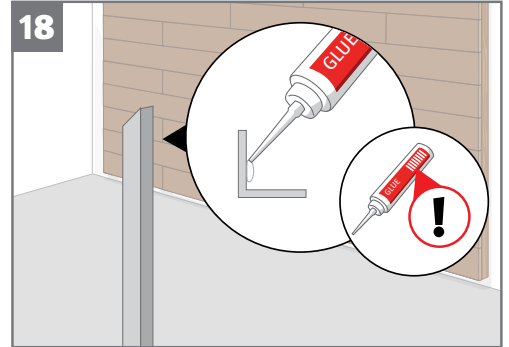
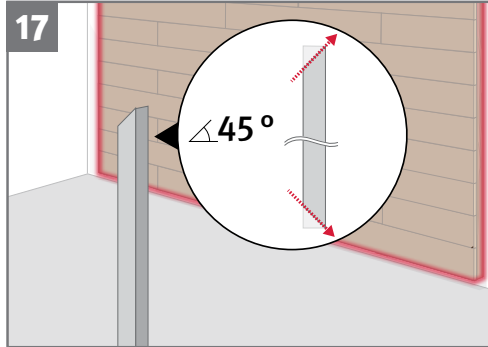
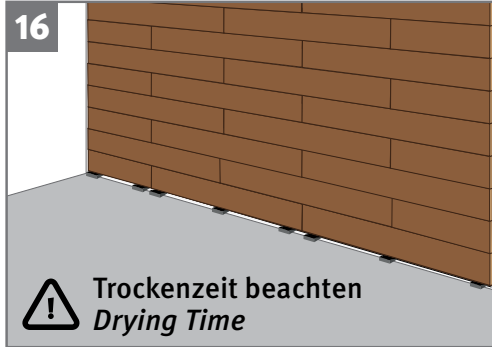
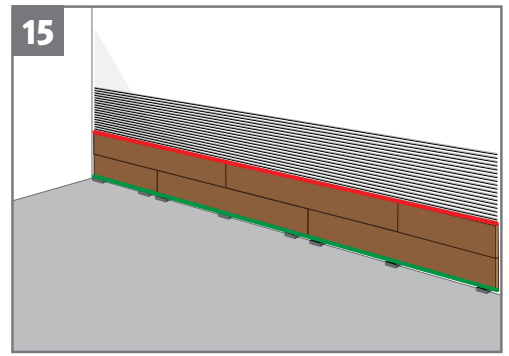
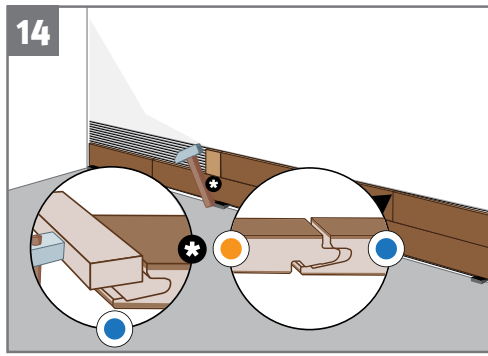
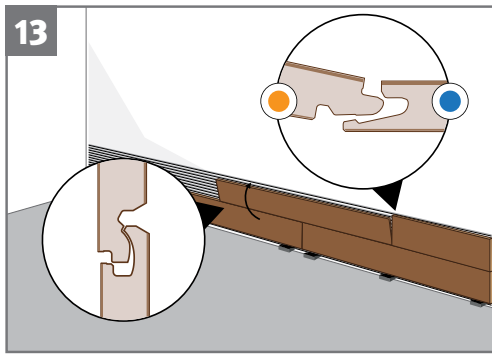


Montageanleitung für die Wandverklebung mit EGGER Aqua+ und Design-Boden GreenTec Elementen!

Installation instructions for wall bonding with EGGER Aqua+ and Design flooring GreenTec elements!





Sicherheitshinweis: Tragen Sie geeignete Schutzausrüstung wie Schutzbrille, Staubmaske und Handschuhe.
Safety advice: Wear suitable protective equipment such as safety goggles, dust mask and gloves.



Die Anforderungen der Brandklasse Efl für Bauprodukte (z.B. Wand- und Deckenverkleidungen) wird erfüllt.
The requirements for fire classification Efl for construction products (e.g. wall and ceiling linings) are also fulfilled.



VOC- und Formaldehydemission für den Wandbereich gemäß AgBB-Schema 2018 und 2021 wird erfüllt. *VOC- and formaldehyde emissions as wall covering are fulfilling the requirements of the AgBB-Scheme 2018 and 2021.*

Vorläufigkeitsvermerk: Technische Änderungen und Druckfehler vorbehalten. Dieser Verarbeitungshinweis wurde nach bestem Wissen mit und besonderer Sorgfalt erstellt.

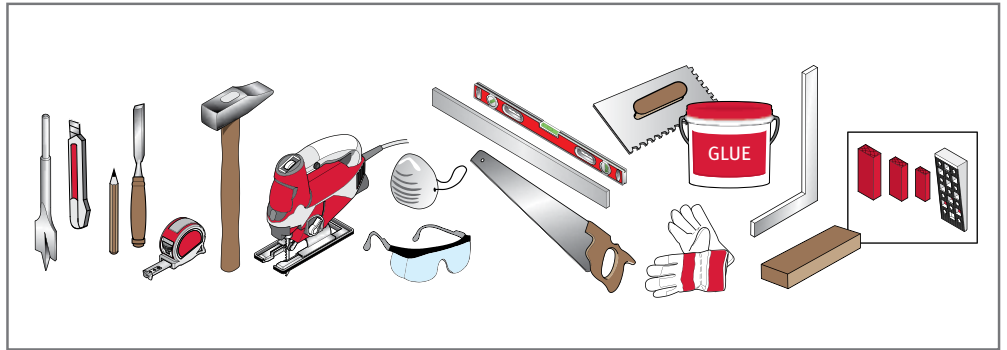
Er dient als Information und beinhaltet keine Zusicherung von Produkteigenschaften oder Eignung für bestimmte Verwendungszwecke. Für Druckfehler, Normfehler und Irrtümer kann keine Gewähr übernommen werden. Zudem können aus der kontinuierlichen Weiterentwicklung von EGGER Böden sowie aus Änderungen an Normen sowie Dokumenten des öffentlichen Rechtes technische Änderungen resultieren.

Notices of provisional status: *These processing instructions have been carefully drawn up to the best of our knowledge. It is intended for information only and does not constitute a guarantee in terms of product properties or its suitability for specific applications. We accept no liability for any mistakes, errors in standards, or printing errors. In addition, technical modifications may result from the continuous development of EGGER Floorings, as well as from changes to standards and public law documents. Subject to technical modifications and printing errors.*

Montageanleitung für die Wandmontage auf Holz-Rahmen-Konstruktion mit EGGER Böden!



Installation instructions for wall paneling on timber frame constructions with EGGER flooring panels!



1

500 mm
20 inch

48 h

2

3

$\geq 44 \text{ mm}$
 $\geq 2 \text{ inch}$

$\geq 74 \text{ mm}$
 $\geq 3 \text{ inch}$

4

$\geq 10 \text{ mm}$
 $\geq 0,5 \text{ inch}$

$\geq 10 \text{ mm}$
 $\geq 0,5 \text{ inch}$

5

6

7

8

x 645 mm 645 mm 645 mm 645 mm
25,4 inch 25,4 inch 25,4 inch 25,4 inch

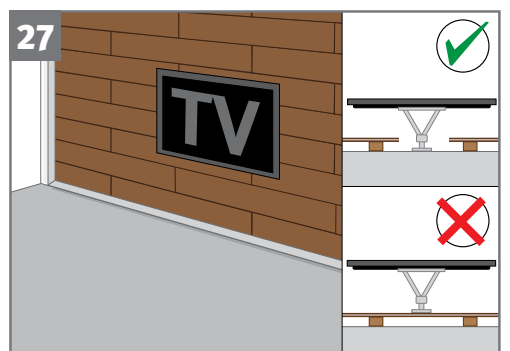
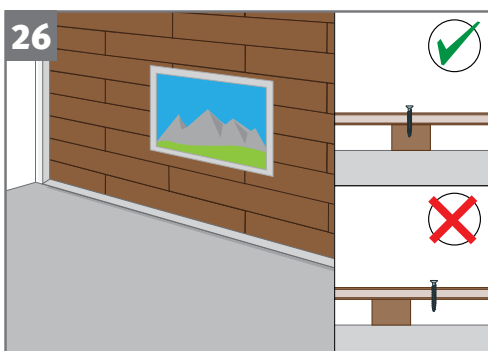
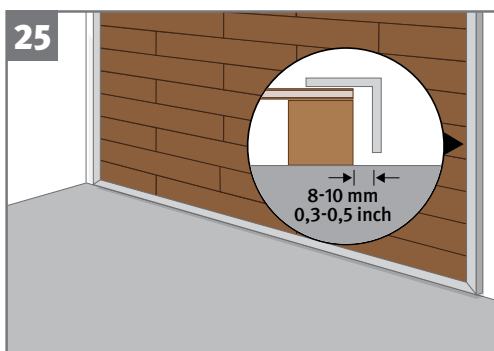
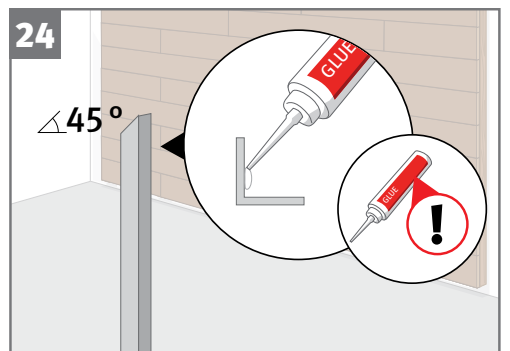
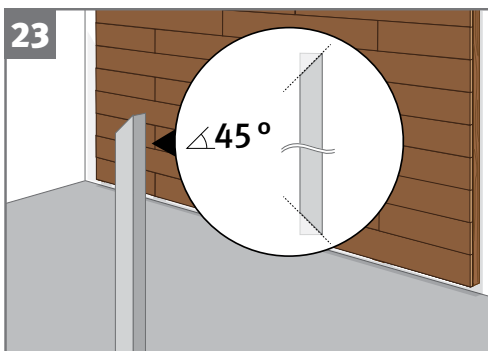
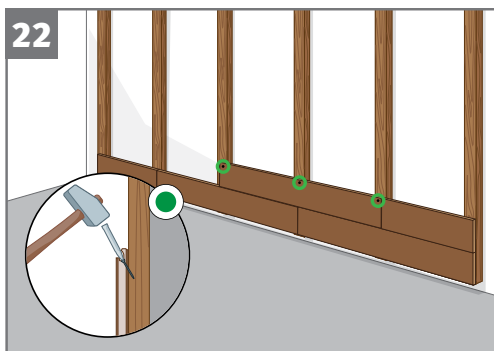
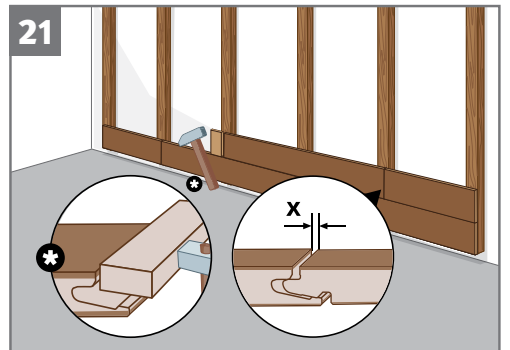
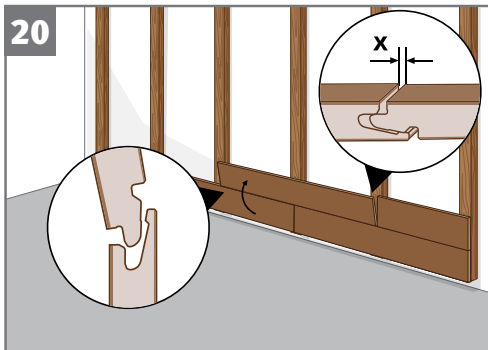
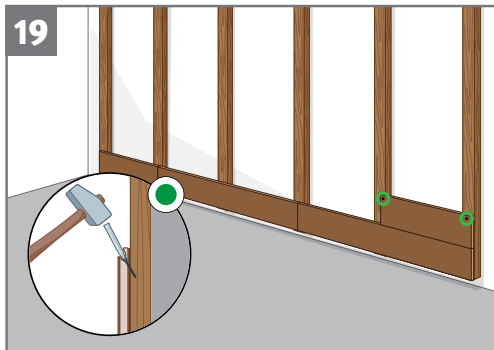
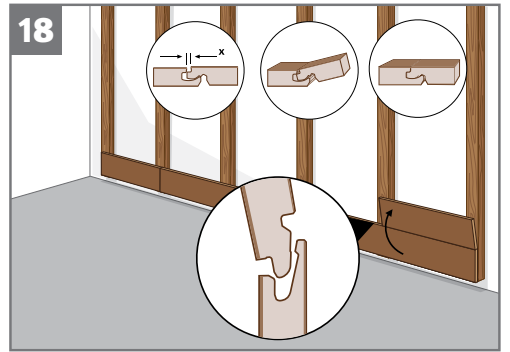
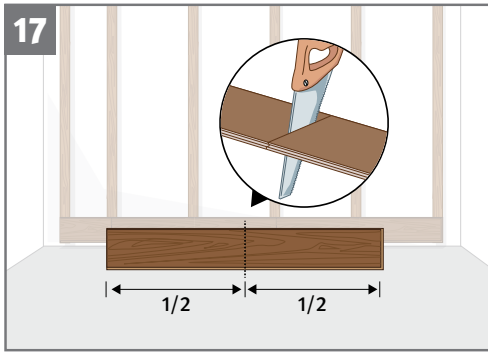
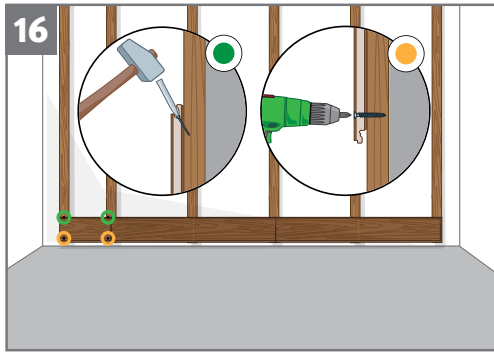
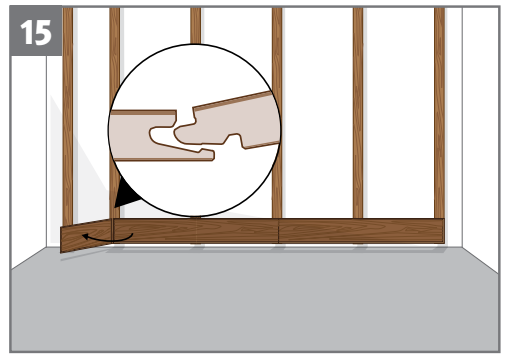
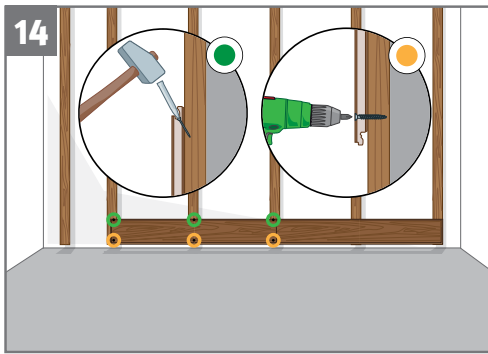
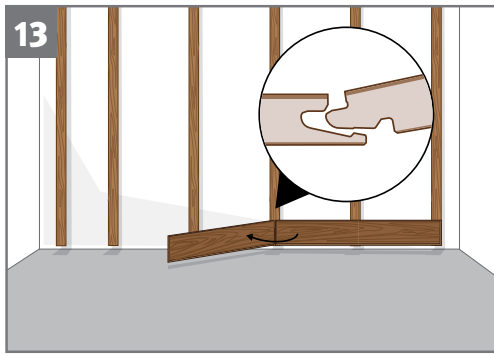
9

10

11

12

1,7 x 2,5 mm
0,07 x 0,1 inch



Sicherheitshinweis: Tragen Sie geeignete Schutzausrüstung wie Schutzbrille, Staubmaske und Handschuhe.
Safety advice: Wear suitable protective equipment such as safety goggles, dust mask and gloves.

Vorläufigkeitsvermerk: Technische Änderungen und Druckfehler vorbehalten. Dieser Verarbeitungshinweis wurde nach bestem Wissen mit und besonderer Sorgfalt erstellt. Er dient als Information und beinhaltet keine Zusage von Produkteigenschaften oder Eignung für bestimmte Verwendungszwecke. Für Druckfehler, Normfehler und Irrtümer kann keine Gewähr übernommen werden. Zudem können aus der kontinuierlichen Weiterentwicklung von EGGER Böden sowie aus Änderungen an Normen sowie Dokumenten des öffentlichen Rechtes technische Änderungen resultieren.
Notices of provisional status: These processing instructions have been carefully drawn up to the best of our knowledge. It is intended for information only and does not constitute a guarantee in terms of product properties or its suitability for specific applications. We accept no liability for any mistakes, errors in standards, or printing errors. In addition, technical modifications may result from the continuous development of EGGER Floorings, as well as from changes to standards and public law documents. Subject to technical modifications and printing errors.