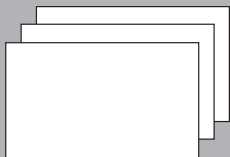


EGGER Advanced Structural Flooring System - Lifetime Guarantee

We are so confident in the quality and performance of our boards, adhesive and fitting method, that when all 3 are used in combination we can provide customers with a unique lifetime guarantee.

1 Select the correct EGGER board for your project from the EGGER Advanced Range.



+

2 Use in conjunction with EGGER Joint & Joist D4 Adhesive.



+

3 Fit in accordance with this Fitting Guide.



=



Enjoy the peace of mind that comes from knowing the finished EGGER floor is covered by our unique lifetime guarantee*

* For terms and conditions and further information on the EGGER Advanced Lifetime Guarantee please visit www.egger.com/lifetime

EN_268488_06/17
Subject to technical modifications and amendments.

EGGER (UK) Limited
Anick Grange Road
Hexham, Northumberland
NE46 4JS
United Kingdom

BUILDING PRODUCTS HOTLINE

For product, technical advice or general information:

T 0845 602 4444 (charged at local rate)

From R.O.I. please call: T +44 1434 613304

Or email us: building.uk@egger.com

ONLINE TECHNICAL SUPPORT

Visit our website for product and technical information: material safety data sheets, technical data sheets, certificates and test reports. www.egger.com/building



View fitting videos here

MORE FROM WOOD.

EGGER

The **EGGER**
ADVANCED
Structural Flooring System
Fitting guide

EGGER Advanced Structural Flooring System - Fitting Benefits

Faster installations with fewer stoppages

- A quick, straightforward system that's easy to use with less room for errors or mistakes.
- Floors can be installed even in light rain conditions and left exposed to the elements for up to 60 days if using EGGER Protect, and up to 42 days if using EGGER Peel Clean Xtra. (Please note EGGER P5 is for use in dry conditions only).

Save Costs

- No need to use Joint sealing tapes to cover board joints.
- No requirement for expensive tools or applicator guns.

Fewer call backs and issues after handover

- Developed to vastly reduce squeaks associated with fully nailed floors.
- Comes with a lifetime guarantee when applied correctly using EGGER Boards and Joint & Joist D4 Adhesive.

Stronger floors

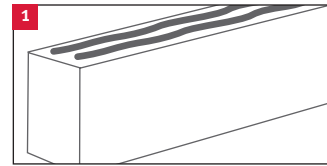
- New EGGER Joint & Joist D4 Adhesive is up to 5 × stronger than a nailed fixing.
- Manufactured using diamond tipped tooling to ensure tight, highly consistent tongue & groove joints.

The EGGER Advanced Range

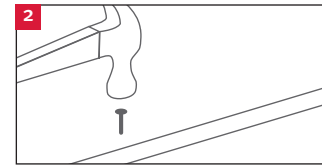


EGGER Advanced Structural Flooring System Fitting Method

Suitable for use with solid timber joists and engineered joists, it is advisable to follow joist manufacturers recommendations in conjunction with fitting EGGER flooring grade chipboard.

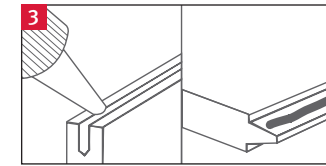


Apply two parallel beads of EGGER Joint & Joist D4 Adhesive to the top of the joist along the first row of boards.

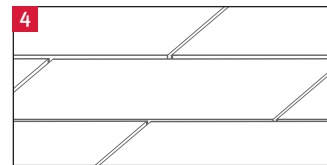


Lay the boards across the joist and fix the first row of boards with only one nail per joist from the board edge using an annular ring shank nail 2.5 times the board thickness.

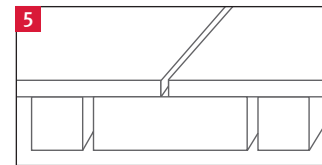
Please ensure that all exposed fitting heads are sealed with EGGER Joint and Joist D4 Adhesive to prevent potential moisture ingress.



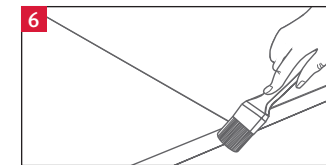
Apply EGGER Joint & Joist D4 Adhesive directly to the groove and shoulder of the profile joint, continuing down the length of each board to ensure that the entire joint is bonded once the boards are butted tightly together. Adhesive should foam out of the board joint - this will enhance the protection of the joint. Excess adhesive should be left to dry.



Apply EGGER Joint & Joist D4 Adhesive along the next row of joists and stagger the next row of panels by approximately half a board to form a brick bond laying pattern. Repeat steps (excluding step 2) and note that care should be taken when walking on newly laid boards.



All short end joints should always fall on the centre of a secured joist including perimeter edges. Where this is not the case refer to NHBC guidelines.



Seal any exposed nail heads perimeter edges, cut edges and stairwells using EGGER Joint & Joist D4 Adhesive.

Once the building is watertight excess adhesive can be removed with a scraper.

Joist Centres

On joists up to 450 mm centres, 18 mm or 22 mm panels may be used, but on joists up to 600 mm centres 22 mm panels must be used.

Expansion Provision

An expansion gap of 10 mm or 2 mm per metre run of floor, whichever is greater, should be left against all walls. For floors which are in excess of 10 metres long e.g. corridors, intermediate movement gaps (minimum 10 mm) should be incorporated.

Mechanical Fixings

If additional mechanical fixings are required please ensure that all exposed fitting heads are sealed, as in step 2.

Adhesive Coverage

Bonding the board to the joist and within the tongue & groove joint will typically require 1 bottle of EGGER Joint & Joist Adhesive per 6 boards (2400 mm × 600 mm).



ONLINE TECHNICAL SUPPORT
www.egger.com/building



BUILDING PRODUCTS HOTLINE
T 0845 602 4444 (charged at local rate)