

MORE FROM WOOD.



Installation instructions
for Egger Laminate Flooring
with *JUST clic!* installation system



JUST clic!



Patented

1. Required Inspection Prior to Installation

EGGER laminate flooring is manufactured in precise stages in highly-advanced and modern production facilities. Both finished and ongoing products are subjected to regular stringent checks. However, damage to individual boards cannot always be prevented. Therefore, the installer should examine each board prior to and during installation. Damaged or otherwise unsuitable pieces of flooring must not be installed and should be returned to the retailer for replacement.

2. Sub-floors

2.1

Prior to installation, sub-flooring must be prepared and assessed as set forth below. Failure to properly prepare the sub-floor prior to installation of EGGER products will void all guarantees and warranties which may otherwise have applied.

Check the moisture level in the sub-floor:

Use a CM device to make sure the following levels are not exceeded:

- For cement-based screed ≤ 2 CM % – heated screed ≤ 1.8 CM %
- For calcium sulphate screed /calcium sulphate floating screed ≤ 0.5 CM % – heated screed ≤ 0.3 CM %
- These values apply to screeds without additives. With the use of additives and in case of fast-setting screed, the measurements and limits specified by the respective manufacturer shall apply.

Check if the sub-floor is level:

Sub-flooring must be completely level prior to installation of EGGER floor products.

Check the load-bearing capacity of the sub-floor:

The sub-floor must be a sealed, self-supporting layer.

Check if the sub-floor is clean:

The sub-floor must be vacuum cleaned.

Check atmospheric conditions:

The following conditions should be met before, during and after installation:

- an air temperature of at least 18° C (64° F)
- a floor surface temperature of at least 15° C (59° F)
- a relative air humidity of between 40 % and 70 %

Sub-floors

2.2

Laminate flooring from EGGER installed as a floating flooring configuration can be installed on all sub-floors which meet the above described requirements, including:

- all types of screed including hot water-heated screed
- chipboard constructions
- fiberboards
- existing floor coatings such as PVC, linoleum, natural stone slabs and ceramic tiles

Unsuitable sub-floors:

- EGGER laminate flooring should never be installed on textile floor coverings (e.g., carpeting) or sub-floors that are not properly prepared for installation. Doing so will void all guarantees and warranties which may otherwise have applied.

Sub-floors of limited suitability include:

- electrically operated underfloor heating (controlling the surface temperature)

Electrical underfloor heating systems are classified as sub-floors with limited suitability given that a range of film-based, electrical heating systems are able to generate surface temperatures that significantly exceed 28°C (82°F). EGGER approves the use of an electrically operated underfloor heating system if it can be controlled digitally and the surface temperature can never exceed 28°C (82°F). Prior to installation of EGGER products, you must verify that the heated flooring system is suitable for use beneath laminate flooring.

Screed

Care must be taken when installing EGGER laminate flooring over screed, as residual moisture may seep to the surface of the sub-floor after installation. When installing laminate flooring over screed, the use of an appropriate moisture barrier is required.

Screeds with hot water floor heating

When installing heated flooring in combination with laminate flooring, all participants (builder, architect, heating specialist, heating technician and installer) must coordinate installation and verify suitability. Precautions must be taken to avoid subjecting EGGER laminate flooring to temperatures exceeding 28°C (82°F), and the heating/cooling mechanism of the sub-flooring should be installed and tested prior to installation of EGGER laminate flooring products.

When heating the load and heat distribution layer, there is a difference between functional heating (i.e., to check the heating system for proper operation), and heating generated for the purposes of curing screed/concrete sub-flooring. In order to ensure removal of moisture beneath laminate flooring, the screed/concrete must be completely cured prior to installation of the laminate flooring.

Attention! The surface temperature of a heated floor structure may not exceed 28°C (82°F). EGGER laminate flooring is generally installed floating. When installing as a floating floor over heated mineral sub-floors, the installer should consider the thermal resistance of EGGER laminate flooring and its insulation underlay. The combined floor must not exceed thermal resistance of 0.15 m²K/W. In addition, the use of an appropriate moisture barrier is required. Failure to install such a barrier will void all guarantees and warranties which may otherwise have applied.

Natural stone and ceramic tiles

When installing EGGER laminate flooring over natural stone or ceramic tile, the use of an appropriate moisture barrier is required. Failure to install such a barrier will void all guarantees and warranties which may otherwise have applied.

Woodchip and fiberboard

When installing EGGER laminate flooring over woodchip and fiberboard a moisture barrier is unnecessary.

Sub-floors/Prior to installation

Wooden boards

Any loose boards should be properly screwed down. When installing EGGER laminate flooring over wooden boards a moisture barrier is unnecessary. The laminate flooring boards must be laid at right angles to existing floorboards.

Elastic flooring surfaces (PVC, linoleum, vinyl)

When installing EGGER laminate flooring over elastic floor coverings a moisture barrier is unnecessary.

Wet rooms / wet areas

Attention! Laminate flooring from EGGER is not suitable for installation in wet rooms and wet areas such as bathrooms, saunas or in similar rooms. Installation in such areas will void all guarantees and warranties.

Attention! Underlay Materials

- On mineral sub-floors such as stone or concrete, a moisture barrier with SD value of ≥ 75 m (250 feet) must be installed prior to installation of EGGER Laminate Flooring. No separate moisture barrier is necessary when using EGGER Silenzio Duo (2 in 1 insulation underlay with integrated moisture barrier) prior to installation of EGGER Laminate Flooring. For all sub-floors, EGGER recommends using EGGER Silenzio underlayment for noise reduction or another underlayment with similar properties [thickness 1.5 mm to 3.0 mm (approx. 1/10 inch), CS value of at least 10 kPa, best ≥ 60 kPa] prior to installation of the EGGER Laminate flooring. Failure to install such a barrier or underlayment will void all guarantees and warranties which may otherwise have applied.

3. Before the installation

Acclimatization of floor boards

Prior to installation, EGGER laminate floorings must be acclimatized to the environment in which they will be installed. Acclimatization should consist of the following:

- flooring may remain in its package
- for a period of at least 48 hours
- laid flat with a minimum of 50 cm (20 inches) from all walls
- at a room temperature of at least 18° C (64° F)
- at a flooring surface temperature of at least 15° C (59° F)
- at a relative atmospheric humidity of between 40 % and 70 %

Direction of installation

Laminate flooring looks best when the floor boards are installed parallel to the light direction. However, when installing over hardwood or strip parquet floors, the new floor boards must be installed perpendicular to the existing floor boards.

Planning the first row

First, the room must be measured to determine whether the width of the first row should be reduced. This will be necessary if the last row to be laid is calculated to be less than 5 cm (2 inches) wide.

Planning expansion gaps

Laminate flooring, like all organic materials, is subject to shrinkage and/or expansion after installation. It is recommended that the installer allow gaps of 8 to 10 mm (1/3 to 1/2 inch) against all fixed objects to which the new flooring abuts, including walls, door frames, pipes, pillars and stairs.

Planning movement profiles

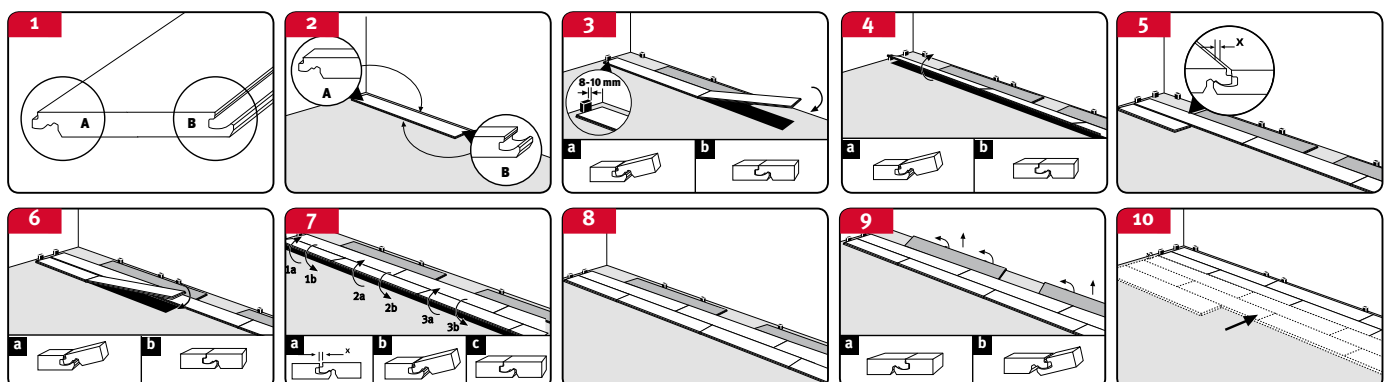
Floor transition thresholds must be installed in the following areas and flooring sizes because of the natural movement behaviour of laminate flooring:

- door thresholds
- passageways
- angled areas
- room lengths and / or widths of more than 10 m (32.808 ft)

4. Installation

- Check the floor panels for any damage. Ensure you understand the difference between the tongue and the groove on the panel (Fig. 1).
- Start laying the first row of boards in a left-hand corner of the room with both the long and short sides of the board positioned so that the tongue is closest to the walls (Figure 2).
- In order to fit the panels on their narrow side insert the new panel to be laid at an angle from above into the groove side of of the already laid panel and lower it until it lies flat on the sub-floor (Figure 3). The last panel in the first row can be marked and cut to the required length. In order to allow subsequent rows to be added to the long edge without gaps, make sure the long edges of the panels are lined up precisely in the first row. It is recommended to insert a piece of the flooring as a stop / spacer between the wall and the flooring being installed in the first row, respectively along the long side where the narrow edges are connected. After installing the first 2-3 rows, remove these positioning elements and correctly align the installed laminate flooring with the walls, observing the required gaps (placing the spacers). (Figure 3 to 10)
- If the excess board length cut from the final board of the first row is at least 200 mm (8”) long, then use it to begin the second row. This can be repeated for additional rows of flooring, and typically will result in desired staggering of the floor boards.
Attention! Make sure that the boards are staggered at least 200 mm (8”). In case of products supplied with the bevel and/or with a special decor (e.g., tiles decor), ensure the offset is even according to the bevel and/or pattern.
- Place the tongue on the protruding lower lip of the first panel of the first row (Figure 5). Connect all other panels for this row on their narrow sides as described above, until the entire row is installed. Afterwards, all short sides of the panels in this row should be adjusted and connected with each other (Figure 6).
- Slightly raise the first panel or panel section and connect its long edge with the first row. Continue to do so until you have connected the whole row with the previously laid row (Figure 7). Pay attention that the panels are not displaced along the short sides.
- You can now install panel after panel, row after row.

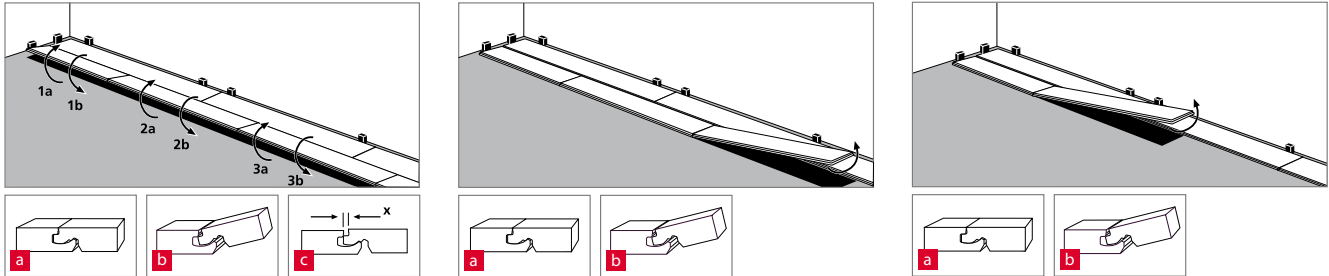
When installing the final row of flooring, you will likely need to cut the width of the panels and to adjust the angle of the panels to accommodate rooms which are out of square. A “short-cut” for properly measuring the cuts necessary for the best fit and appearance is as follows: Take a panel and stack it flush on top of a panel from the row you just finished. Take a spare panel and lay it flush against the wall, over the gap between the wall and the stacked pieces of floor you just created. The spare piece will reflect the angle and width of the gap. Trace the edge of the spare piece onto the panel you intend to install, and cut that panel accordingly. Be sure to allow for an expansion gap of 8 – 10 mm (approximately 1/3 to 1/2 inch) when making the cut.



Installation

Removal / Dismantling of Elements

In order to replace installed panels without destroying them, you first have to unlock the entire row by tilting it and then offset the panels at the short ends while tilted. Be careful to avoid damaging the tongue and groove.



Class 31, 32 and 33 Commercial Applications

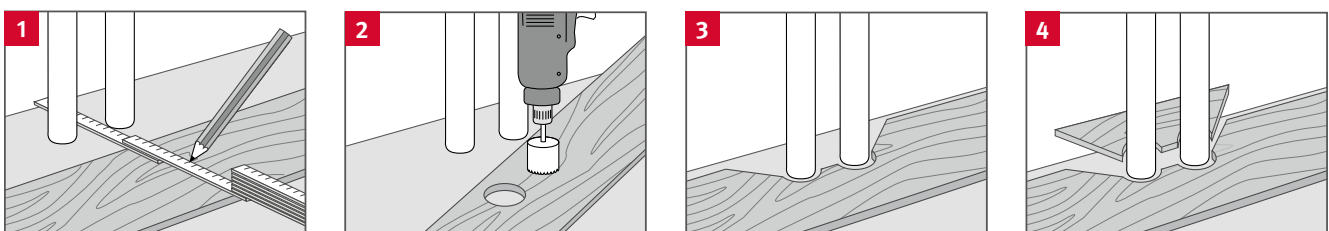


Commercial areas are exposed to higher levels of moisture and because of this, additional sealing with PVAC glue (D3), is required in such applications. The sealing glue should be applied on the long and short side of the tongue of the board being installed so that it can leak out along the full length of the connection at the top when the boards are joined together. Make sure that there is no gap in the flooring joints under the glue which has oozed out. Excess sealing glue is easy to remove from the surface immediately or after a short drying period.

Built-in kitchens/built-in cabinets

Built-in kitchens and built-in cupboards should be assembled prior to installation and the laminate flooring should be placed just under the base.

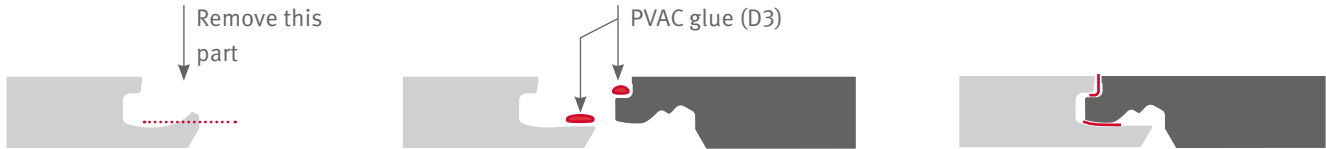
Pipes



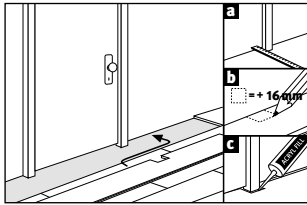
- Measure the position of the pipes and mark it on the panel (allow for edge joint).
- Drill at least 16 mm (1/2 inch) more than the diameter of the pipe.
- Saw to the holes at a 45° angle.
- Fit and glue the piece as modified.

Installation

Door frames



- If there are wooden door frames, it is recommended to shorten these by the installation height (flooring plus underlay materials) in consultation with the customer.
- Then install laminate flooring under the frame with an appropriate expansion joint. In case the installation takes you to a door frame, we recommend that the locking part is removed from the protruding groove of the pre-installed panel with a chisel. The newly installed panel can then be pushed horizontally over the groove of the previously installed panel. This connection area has to be glued with a PVAC glue.
- On door frames that cannot be shortened, e.g., one made of metal, the fitted expansion joint must be sealed or covered with an elastic jointing material or suitable end profiles.



Floor Thresholds and Base Mouldings

Floor transition thresholds and base mouldings should be installed only after installation of flooring.

Attention! If transition thresholds will require the installation of a base on which to attach them, the base piece should be placed prior to installing the adjoining pieces of laminate flooring.

5. Cleaning and maintenance

- Entrance areas should be equipped with a reasonably sized doormat.
- In commercial applications where the laminate flooring area leads directly outside, an appropriately sized clean-off zone must be built into the floor structure.
- Attach felt pads to the feet of furniture, including chairs and tables. Clean these regularly, check for proper functionality, and replace if required.
- Lift furniture when moving, rather than pushing or dragging.
- Use soft furniture castors (type W) in the case of office chairs and all other objects on castors. Clean office chair and furniture castors regularly, check for proper functionality and replace if required.
- Immediately remove stagnant moisture fluids (humidity).
- Steam cleaners should not be used, except of Aqua+ Laminate Flooring.
- Only clean the laminate floor with a damp cloth.
- Never use abrasives or scouring agents on the laminate floor.
- Do not use cleaning products that may leave a residue. We recommend our system-related flooring cleaner Clean-it from EGGER.
- It is unnecessary to apply wax or polish to EGGER laminate flooring. The use of wax or polish will void all guarantees and warranties.
- It is unnecessary to apply sealant to EGGER laminate flooring. The use of sealant will void all guarantees and warranties.
- Use the hard floor nozzle (brush accessory) when vacuum cleaning.
- Built-in kitchens and built-in cupboards should be assembled prior to installation and the laminate floor should be placed just under the base.

No matter how hard-wearing your laminate floor is, a piece of flooring may still get damaged. If the damage is slight, use EGGER repair paste, Decor Mix & Fill, to repair. More severely damaged panels can be easily replaced by a professional fitter. Separate instructions are available upon request.

For instructions on installation on stairs, or for other installation issues not addressed in this material, please contact your local dealer.

www.egger.com

EGGER Holzwerkstoffe Wismar

GmbH & Co. KG
Am Haffeld 1
23970 Wismar
Germany
T +49 3841 301-0
F +49 3841 301-20222
flooring@egger.com

EGGER Drevprodukt Gagarin

Ezhvinsky proezd, 1
215010 Gagarin
Oblast Smolensk
Russia
T +7 48135 79-300
F +7 48135 79-311
info-ru@egger.com

Advice, service and more: