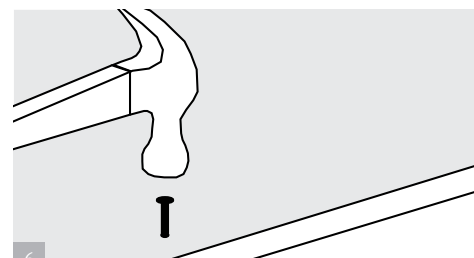
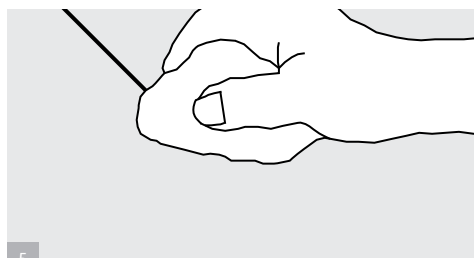
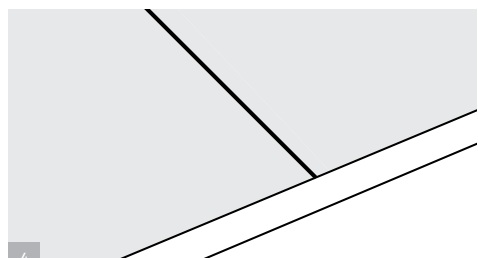
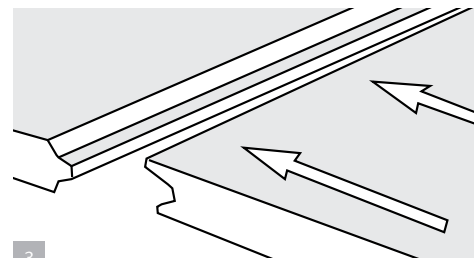
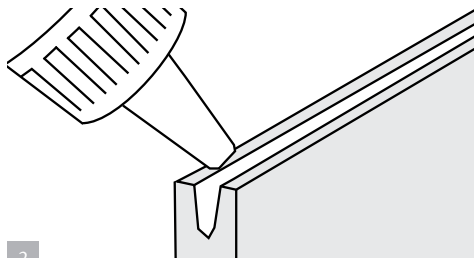
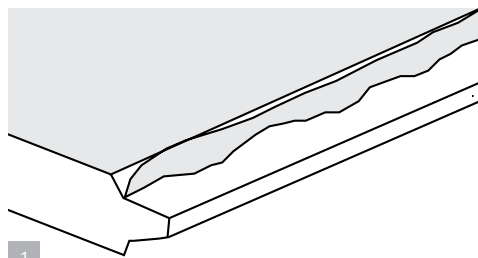


## MECHANICAL FIXING

## PROFESSIONAL

### DIRECTIONS FOR USE



1. A liberal amount of EGGER D3 Adhesive should be applied directly onto the shoulder of the tongue.
2. A generous bead of EGGER D3 Adhesive should also be applied directly into the groove of the board. Position board and close joints tightly.
3. Ensure a small bead of Adhesive is forced out of the joint on both the top and bottom of the board along the entire length of the joint. Any excess adhesive can be wiped away using a damp cloth. You are now left with a sealed joint.
4. Panels are glued to the joists and noggings using the EGGER D3 Adhesive and fixed using 10 gauge annular ring-shank nails of length 2.5 times the thickness of the panel, nails should be positioned 15 mm from each edge of the board and then at equidistant points in between at a rate of four nails per joist. Nails should be hammered flush with the surface of the panel.
5. All nail runs and exposed edges around the perimeter should be immediately painted with EGGER D3 Adhesive, this operation must be carried out in dry conditions.
6. When all construction and decoration work is complete and the building is weather tight, the deck should be swept down and the peel-off covering removed by pulling firmly but slowly from the short end. A sharp knife should be used around the perimeter to free any of the covering which may have become snagged.

#### NOTES

Where nailing could damage ceilings or joists, panels should be fixed using countersunk screws in pre-drilled holes.

#### SEALING

After a run of panels is fixed, all board joints, nail runs and exposed edges around the perimeter are immediately painted with EGGER D3 Adhesive, this operation must be carried out in dry conditions.

#### FINISHING

If the board surface or edge tape (if used) is damaged during the construction period it must be repaired immediately.

