

## EGGER PRODUCTION SITES

**FRITZ EGGER**  
GmbH & Co.  
Holzwerkstoffe  
Weiberndorf 20  
A-6380 St. Johann in Tirol  
Tel. +43 (0) 50600-0  
Fax +43 (0) 50600-10111  
info-sjo@egger.com

**FRITZ EGGER**  
GmbH & Co.  
Holzwerkstoffe  
Fabriksweg 11a  
A-6300 Wörgl  
Tel. +43 (0) 50600-0  
Fax +43 (0) 50600-13039  
info-woe@egger.com

**FRITZ EGGER**  
GmbH & Co.  
Holzwerkstoffe  
Tiroler Straße 16  
A-3105 Unterradlberg  
Tel. +43 (0) 50600-0  
Fax +43 (0) 50600-12100  
info-urb@egger.com

**Österr. Novopan**  
Holzindustrie GmbH Nachfg.  
Turmgasse 43  
A-8700 Leoben-Göss  
Tel. +43/3842/226 31-0  
Fax +43/3842/226 31-14 018  
info-leo@egger.com

**EGGER Holzwerkstoffe Brilon**  
GmbH & Co. KG  
Im Kissen 19  
D-59929 Brilon  
Tel. +49/29 61/770-0  
Fax +49/29 61/770-62 222  
info-bri@egger.com

**EGGER Kunststoffe**  
GmbH & Co. KG  
Im Weilandmoor 2  
D-38518 Gifhorn  
Tel. +49/53 71/865-0  
Fax +49/53 71/865-24 128  
info-gif@egger.com

**EGGER Elemente**  
GmbH & Co. KG  
Daimlerstraße 34-40  
D-32257 Bünde  
Tel. +49/52 23/68 66-27 10  
Fax +49/52 23/68 66-67 149  
info-bue@egger.com

**EGGER Bevern**  
GmbH & Co. KG  
Flüttenweg 10  
D-37639 Bevern  
Tel. +49/52 76/98 94-250  
Fax +49/52 76/98 94-65 600  
info-bev@egger.com

**EGGER Beschichtungswerk Marienmünster**  
GmbH & Co. KG  
Im Kissen 19  
D-59929 Brilon  
Tel. +49/52 76/98 94-0  
Fax +49/52 76/98 94-26 111  
info-mar@egger.com

**EGGER Holzwerkstoffe Wismar**  
GmbH & Co. KG  
Am Haffeld 1  
D-23970 Wismar  
Tel. +49/38 41/301-0  
Fax +49/38 41/301-20 222  
info-wis@egger.com

**EGGER (UK) Limited**  
Anick Grange Road  
Hexham-Northumberland  
NE46 4JS  
Tel. +44/14 34/60 21 91  
Fax +44/14 34/60 51 03  
info.uk@egger.com

**EGGER Barony Ltd.**  
Barony Road  
Auchinleck  
Scotland KA18 2LL  
Tel. +44/12 90/42 60 26  
Fax +44/12 90/42 44 20  
info.uk@egger.com

**EGGER-ROL**  
Avenue d'Albret  
Boîte Postale 1  
F-40371 Rion des Landes  
Cedex 01  
Tel. +33 (0) 5 58 56 81 81  
Fax +33 (0) 5 58 56 81 39  
info.fr@egger.com

**EGGER Rambervillers S.A.**  
Z.I. de Blanchifontaine  
F-88700 Rambervillers  
Tel. +33 (0) 3 29 68 01 01  
Fax +33 (0) 3 29 68 01 03  
info.fr@egger.com

**OOO "EGGER Drevprodukt"**  
Jushnoje Chaussee 1  
RU-155908 Shuya  
Tel. +7/49351/39 000  
Fax +7/49351/39 111  
info-ru@egger.com

## EGGER SALES OFFICES

**EGGER BENELUX BVBA**  
Limnanderdreef 44  
B-9870 Zulte  
Tel. +32/9/388 64 41  
Fax +32/9/338 00 55  
info-benelux@egger.com

**EGGER SHANGHAI**  
FRITZ EGGER SHANGHAI Rep. Office  
Unit 3609, Southern Securities Tower  
580 Nan Jing Road (W)  
Shanghai 200041, P.R. China  
Tel. +86/21/52 34-06 88  
Fax +86/21/52 34-09 88  
shanghai@egger.com

**EGGER ITALIEN**  
CARLO CAPPELLARI ITALIA SRL  
Via Nazionale, 11  
I-33010 Tavagnacco (UD)  
Tel. +39/0432/47 85-21  
Fax +39/0432/47 85-65  
info-it@egger.com

**EGGER Polska Sp. z o.o.**  
ul. św. Michała 43  
PL-61-119 Poznań  
Tel. +48/61/650 36 01  
+48/61/650 36 02  
Fax +48/61/650 36 03  
info-pl@egger.com

**OOO "EGGER Drevprodukt"**  
125040 Russia, Moscow  
3-ya ul. Yamskogo polya 32  
Tel. +7/495/231 28 28  
Fax +7/495/739 67 67  
info-ru@egger.com

**EGGER Schweiz**  
Rosenstrasse 2/Postfach  
CH-6011 Kriens  
Tel. +41/41/349 50 00  
Fax +41/41/349 50 01  
info.ch@egger.com

**EGGER SCANDINAVIA APS**  
Jernbanegade 5A  
DK-6862 Tistrup  
Tel. +45/75/29 10 00  
Fax +45/75/29 11 50  
info-scan@egger.com

**EGGER Tsch. Rep./Slowakei**  
EGGER CZ s. r. o.  
Habrmanova 14  
CZ-50002 Hradec Králové  
Tel. +420/49/55 31-531  
+420/49/55 31-532  
Fax +420/49/55 31-534  
info-cz@egger.com

**EGGER UKRAINE**  
Victor Tomnyuk  
ul. Oktyabrskaya 9  
UA-08700 Obukhov  
Kievskaya obl.  
Tel./Fax +38/04472/51105  
Mobil +38/067/7122304  
info-ua@egger.com

**EGGER Bulgaria**  
Rilko Dinov  
2 Dimitar Sofianec Str.  
1505 Sofia  
Tel./Fax +359 2 9441887  
Mobil +359 899 117 333  
info-bg@egger.com

**EGGER SERBIA PR**  
Miloš Marinković  
Karadjordjeva 16/22  
11300 Smederevo, Srbija  
Tel. +381 /26 222 555  
Fax +381 /62 283 841  
info-cs@egger.com

**FRITZ EGGER GmbH**  
Magyarországi Képviselete  
Váci út: 99  
HU-1139 Budapest  
Tel. +36 1 238 8013  
Fax +36 1 238 8014  
Mobil +36/30/348 99 76  
info-hu@egger.com

**EGGER Slovenija**  
Gorazd Kuzman s.p.  
Gasilska cesta 9  
SI-4208 Šenčur  
Tel. +386 4 2515700  
Fax +386 4 2515701  
Mobil +386 40 301619  
info-slo@egger.com

**EGGER Baltikum**  
V. Grybo 34-1  
LT-10318, Vilnius  
Tel. +370 52 10 11 80  
Fax +370 52 10 11 79  
Mobil +370 610 376 42  
info-baltics@egger.com

**EGGER România**  
Bdul. Dimitrie Pompeiu 10A,  
Et. 4, Sector 2  
RO-020337 București  
Tel. +40 21 311 01 38  
Fax +40 21 311 01 39  
info-ro@egger.com

**EGGER TÜRKİYE (İRTİBAT BÜROSU)**  
Yetkili: Murat Yılmaz  
Keresteciler Sit. 11. Blok No: 1 Kat: 5  
34306 Küçükçekmece - İstanbul  
Tel. +90 212 6705115  
Fax +90 212 6705116  
info-tr@egger.com

**EGGER Retail Products GmbH**  
Weiberndorf 20  
A-6380 St. Johann i.T.  
Tel. +43 (0) 50600-0  
Fax +43 (0) 50600-10443  
info-sjo@egger.com

**EGGER Retail Products GmbH & Co. KG**  
Im Kissen 19  
D-59929 Brilon  
Tel. +49/2961/770-0  
Fax +49/2961/770-62 919  
info-bri@egger.com

**EGGER Retail Products GmbH & Co. KG**  
Am Haffeld 1  
D-23970 Wismar  
Tel. +49/3841/301-0  
Fax +49/3841/301-20 222  
info-wis@egger.com

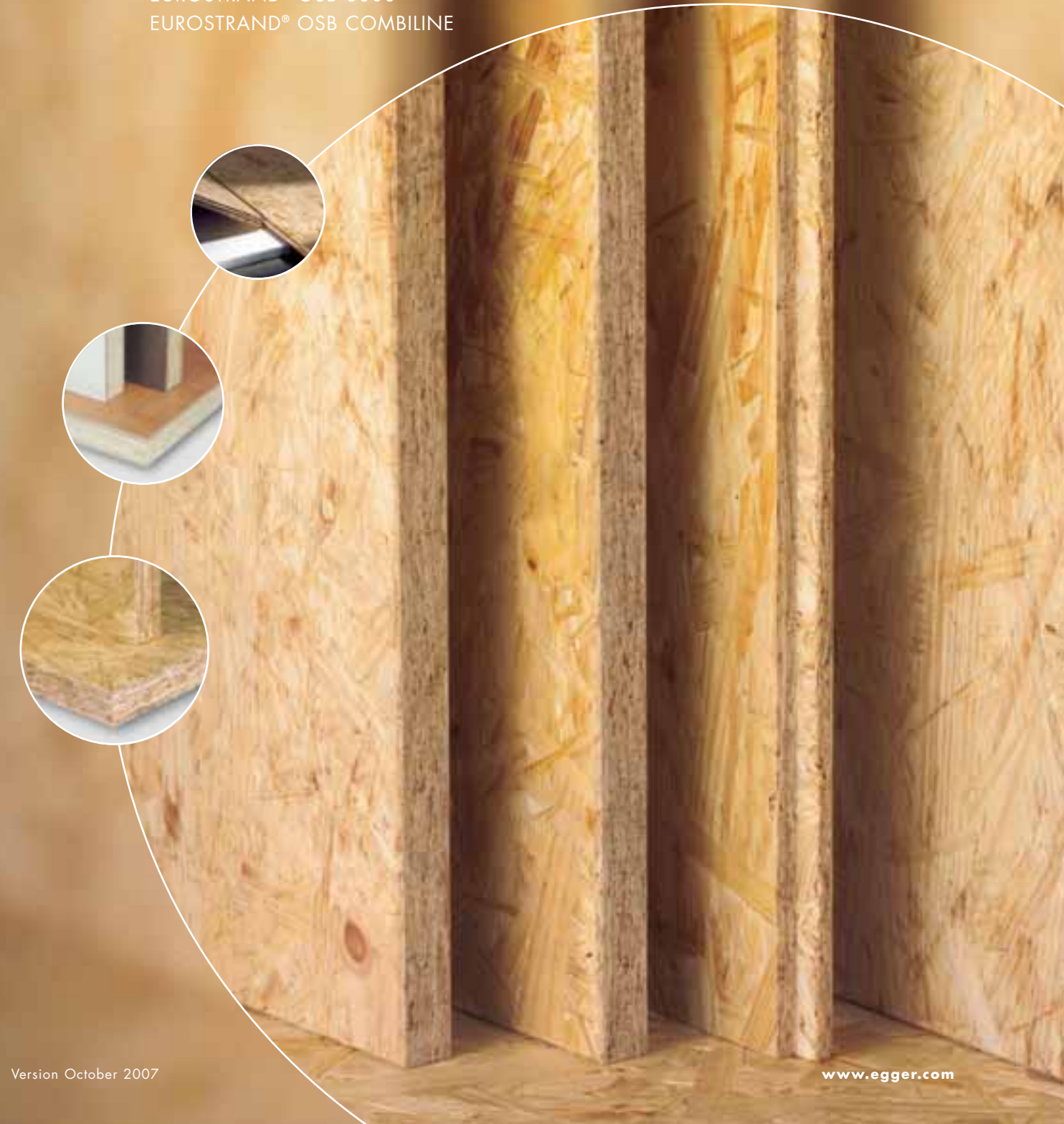
**EGGER Retail Products, Ltd**  
Anick Grange Road  
Hexham-Northumberland  
NE46 4JS, UK  
Tel. +44/14 34/60 01 26  
Fax +44/14 34/60 01 22  
efp-uk@egger.com

**EGGER Retail Products France S.A.**  
19 Rue Edouard Vaillant  
BP 1001  
F-37010 Tours Cedex 1  
Tel. +33 (0) 24 77 01 250  
Fax +33 (0) 24 70 58 289  
efp-fr@egger.com

**EGGER Polska Sp. z o.o.**  
ul. św. Michała 43  
61-119 Poznań  
Tel. +48/61/843 90 25  
+48/61/843 95 27  
+48/61/843 95 28  
Fax +48/61/847 13 28  
efp@egger.com.pl

## EGGER EUROSTRAND® OSB

EUROSTRAND® OSB ContiFine  
EUROSTRAND® OSB Tongue and Groove  
EUROSTRAND® OSB 4 TOP  
EUROSTRAND® OSB 8000  
EUROSTRAND® OSB COMBILINE



Version October 2007

www.egger.com

EN\_726678\_10/07 Subject to technical modifications and amendments.

Further Sales Offices can be found on [www.egger.com](http://www.egger.com)



### Pioneering oriented strand board solutions

With 15 plants, EGGER is one of the leading wood-based manufacturers in Europe. Offering durable products and solutions with high value is the main mission of the company.

Our materials provide solutions for both construction and decorative applications. At our production plant in Wismar, Germany, we use the latest plant technology to produce products with specific properties to ensure optimum efficiency for users. Raw materials of the highest quality and separate strand preparation for the surface and core layer give our orientated strand board (OSB) a new dimension.

EGGER is a well respected name in construction due to the quality, product range diversity and number of certified and tested products we offer.



**Jana Sprockhoff**

Dipl. Ing. (TU)

Holz- und Faserwerkstofftechnik

Group Product Manager

for construction related enquiries

[Jana.Sprockhoff@egger.com](mailto:Jana.Sprockhoff@egger.com)

**Contents**

**EUROSTRAND® OSB 06-07**

EUROSTRAND® OSB ContiFine 07

**EUROSTRAND® OSB Tongue and Groove 08-09**

EUROSTRAND® OSB Tongue and Groove ContiFine 09

EUROSTRAND® OSB Sanded Tongue and Groove 09

**EUROSTRAND® OSB 4 TOP 10-11**

EUROSTRAND® OSB 4 TOP ContiFine 11

**EUROSTRAND® OSB 8000 12-13**

EUROSTRAND® OSB 8000 sanded 13

EUROSTRAND® OSB 8000 unsanded 13

**EUROSTRAND® OSB COMBILINE 14-15**

EUROSTRAND® OSB COMBILINE sanded 15

EUROSTRAND® OSB COMBILINE coated with primer film 15

**EUROSTRAND® OSB International 16-17**

EUROSTRAND® OSB International 17

**DELIVERY OPTIONS 18-19**



## EGGER EUROSTRAND® OSB

EUROSTRAND® OSB is a synthetic resin-bonded board made from wood-based materials and constructed of three layers consisting of oriented strands (micro-veneers).

The separate strand preparation for the surface and core layer, the specific strand geometry (length up to 150 mm) and a higher degree of orientation of the strands in the covering layers in the direction of the fibres ensures optimum technical properties and an attractive appearance.

## EGGER EUROSTRAND® OSB

### EUROSTRAND® OSB ContiFine

EUROSTRAND® OSB ContiFine are unsanded OSB boards with a consistently light and even surface. Due to this board's distinctive wood structure on the surface, EUROSTRAND® OSB ContiFine is also often used for decorative purposes. Moreover the ContiFine surface provides additional protection against temporary humidity.



### APPLICATIONS/AREAS OF USE

#### WOOD CONSTRUCTION/ HOUSING CONSTRUCTION

- For single and two storey properties
- For terraced houses
- Multiple family dwelling (up to 3 storeys)
- Wall, roof and ceiling planks
- Termite treated sheathing board (H2 Australien Certification)

#### FURNITURE MAKING/INTERIOR FITTINGS

- Interior fittings
- Floor renovation
- Cladding
- Exhibition stand construction

#### CONCRETE BOARDING

- "Sacrificial" shuttering
- Foundation shuttering
- Pre-cast concrete shuttering
- Permanent/encapsulated shuttering

#### INDUSTRIAL APPLICATIONS

- Packaging acc. to ISPM 15 Standard
- Vehicle linings
- Warehouse construction
- Protected enclosures



More detailed information can be requested from [www.egger.com](http://www.egger.com).



**EUROSTRAND® OSB Tongue and Groove ContiFine**

EUROSTRAND® OSB tongue and groove boards are available as unsanded flooring boards with a 4-sided tongue and groove profile or as a roofing and wallboard with a 2-sided tongue and groove profile in a variety of thicknesses and formats.



**EUROSTRAND® OSB Sanded Tongue and Groove**

Sanded EUROSTRAND® OSB tongue and groove boards, which possess the same material properties provide an ideal base for decorative coatings. In contrast to the distinctive strand appearance that boards with a ContiFine surface possess, the sanded board surface gives the definite impression of natural wood.



**APPLICATIONS/AREAS OF USE**

**WOOD CONSTRUCTION/  
HOUSING CONSTRUCTION**

- For single and two storey properties
- For terraced houses
- Multiple family dwelling (up to 3 storeys)
- Dry flooring

**CONCRETE BOARDING**

- "Sacrificial" shuttering
- Foundation shuttering
- Pre-cast concrete shuttering
- Permanent/encapsulated shuttering

**FURNITURE MAKING/INTERIOR FITTINGS**

- Decorative flooring and cladding
- Floor renovation
- Exhibition stand construction
- Decorative fittings

**INDUSTRIAL APPLICATIONS**

- Packaging a. to ISPM Standard
- Vehicle linings
- Warehouse and stage construction
- Protected enclosures



## EGGER EUROSTRAND® OSB 4 TOP

EUROSTRAND® OSB 4 TOP is a variant of EUROSTRAND® OSB, which is glued using an entirely formaldehyde-free PU binder. The abbreviation PU stands for polyurethane (polyurea) and it is this which is used as a binder to be fully compliant with the new more stringent technical and ecological requirements of industrial prefabricated timber construction housing.

## EGGER EUROSTRAND® OSB 4 TOP

Prefabricated timber construction housing in particular requires the best technical and ecological products. In order to meet this demand, EUROSTRAND® OSB 4 TOP (using only PU glue) has been developed and classified as OSB/4 board according to EN 300. The board therefore complies with the strict requirements of the Federal Association of German Prefabricated Construction (BDF/QDF) in terms of emissions and the requirements of the Japanese F\*\*\*\* standard with regard to the level of desiccation (a measurement of formaldehyde). EUROSTRAND® OSB is available as both ContiFine and sanded board with either a square edge or a tongue and groove profile.

### EUROSTRAND® OSB 4 TOP

- OSB/4 according EN 300
- Heavy duty load bearing board
- PU binder = formaldehyde-free gluing (E1 < 0,03 ppm)
- Light, closed surface
- High dimensional stability
- Low thickness swelling



### APPLICATIONS/AREAS OF USE

#### WOOD CONSTRUCTION/ HOUSING CONSTRUCTION

- For single and two storey properties
- For terraced houses
- Multiple family dwelling (up to 3 storeys)
- Wall, roof and ceiling planks
- OSB 4 TOP provides properties of a vapour barrier
- Design values for all types of fasteners to transmit loads available
- Loadbearing glueing of unsanded boards

#### FURNITURE MAKING/INTERIOR FITTINGS

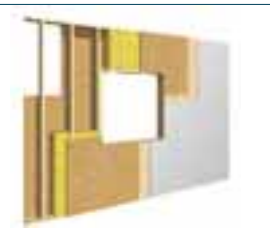
- Interior fittings
- Flooring Renovation
- Cladding
- Exhibition stand construction

#### CONCRETE BOARDING

- "Sacrificial" shuttering
- Foundation shuttering
- Pre-cast concrete shuttering
- Permanent/encapsulated shuttering

#### INDUSTRIAL APPLICATIONS

- Packaging a. to ISPM 15 Standard
- Vehicle linings
- Warehouse construction
- Protected enclosures



More detailed information can be requested from [www.egger.com](http://www.egger.com).

## EGGER EUROSTRAND® OSB 8000

Special heavy-duty loadbearing board for industrial pre-fabricated components (for walls, floors, roofs) and industrial wood construction for engineering purposes in thicknesses ranging from 20 to 30 mm.

## EGGER EUROSTRAND® OSB 8000

### EUROSTRAND® OSB 8000

EUROSTRAND® OSB 8000 is the new, heavy duty loadbearing board for construction and industrial applications and was granted approval by the general building authorities for use in construction in a thickness range of 20 to 30 mm with certificate Z-9.1-562. EUROSTRAND® OSB 8000 is manufactured in our plant in Wismar (Germany) in accordance with the latest standards. The optimisation at every stage in the production process considerably improves the performance of OSB 8000. The separate strand preparation for the surface and core layer, the specific strand geometry (length in the surface layer at least 150 mm) and the direction of the fibres in the surface layer ensures this board has excellent technical properties. Furthermore an optimised spreading of the core and surface layers has contributed to the excellent properties mentioned above. Moreover, production using the formaldehyde-free binder PMDI greatly contributes to the further reduction of the board's emission potential and that of constructions made from it. For example, EUROSTRAND® OSB 8000 can be used for applications such as in innovative system solutions for mass production of wood construction elements with a large surface area to the low-energy and 'passive' house standard, or as a loadbearing reinforcement board in wood construction for engineering purposes. EUROSTRAND® OSB 8000 has already demonstrated these properties in the passive house project 'Tanno meets Gemini' which was awarded the European prize for innovation and a recently completed project carried out by the Technical University in Graz in association with the Griffner House and Lignum Research.



### APPLICATIONS/AREAS OF USE

- Wood construction for engineering purposes
- Innovative system building methods  
(Test house: Technical University Graz, 'Tanno meets Gemini', Weiz)
- False ceilings in industrial buildings
- Roof and ceiling construction with a large span width
- False floors/shelf construction systems
- Loadbearing board for bulk export packaging
- Loadbearing glued elements made of unsanded boards



## EGGER EUROSTRAND® OSB COMBILINE

Loadbearing OSB boards, overlaid with MDF on both sides, offer a heavy-duty solution for decorative coatings to be applied directly.

Der stabile Kern von **Combine** lässt einseitige Fräsung und damit neue Gestaltungsideen zu. Mit der Beschichtung durch eine **MDF**-Oberfläche entstehen spannende gestalterische Akzente.

## EGGER EUROSTRAND® OSB COMBILINE

Wherever an OSB loadbearing board is required to have high bending strength with a coatable surface, EUROSTRAND® OSB COMBILINE is best equipped to meet these requirements through the combination of its OSB core and MDF covering layer.

### EUROSTRAND® OSB COMBILINE

- Innovative combination of EUROSTRAND® OSB and FORMline® 2000 Thin MDF
- High quality loadbearing boards for melamine faced papers, thin veneers, films and varnishes
- A surface that can be milled
- Strong hold of fixings/fittings (e.g. screws), especially near the edge
- Rigid and heavy duty, giving it the longest service life
- High bending strength values and E-modulus values on both the length and width.



### APPLICATIONS/AREAS OF USE

- Furniture-making
- Shelving systems
- Architraves
- False floors
- Shopfitting and interior fittings
- Exhibition stand and stage construction

Bending strength: Length  $\geq 35$  N/mm<sup>2</sup>  
Width  $\geq 25$  N/mm<sup>2</sup>



More detailed information can be requested from [www.egger.com](http://www.egger.com).

EGGER consistently produces products that cater for the international market and their specific requirements. EUROSTRAND® OSB is available in virtually every continent and is specially produced for that relevant market.

The requirements that apply to each market and the product certification that is required is how EGGER decides what products to manufacture. Appropriate evidence is provided for each product to support this.



**EUROPE**

In Europe the prevailing certification for building products is the CE Rating, which is approved by all European member states for the marketing and usage of products in the construction industry. In the German speaking countries (Germany, Austria, Switzerland) EGGER offers boards that have been certified by the construction industry supervisory authority (DIBt), which clearly exceed the quality standards.



**BENELUX**

In addition to the CE certifications that are effective in Europe, individual markets also demand their own quality standards. The KOMO certificate for the Benelux countries allows EGGER to fulfil the individual requirements for this market.



**RUSSIA / EASTERN EUROPE**

The European CE certifications are already recognised in most countries of Eastern Europe. In Russia there are further regulations, as prescribed by Russian law, which are also met by EGGER.



**USA**

High-quality OSB boards are produced for the American market, in accordance with standard PS2-04, using MAXXfloor® Clear Edge. The 23/32" boards, designed for use as load-bearing subfloors (TG2 Span-Rated Uni-Floor), fulfil the highest requirements and constitute a real premium in the US market.



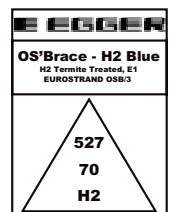
**JAPAN**

EUROSTRAND® OSB/3 JAS TOP is produced specifically for the Asian, in particular for the Japanese, market. The special PMDI bonded boards conform to the Japanese JAS standard and the F\*\*\*\* (F-4star) standard, which imposes the most stringent requirements with regard to emissions.



**AUSTRALIA**

**EGGER OS'Brace®** is a high quality, innovative panel designed and manufactured specifically for the Australian construction industry. The system has been engineered and tested to comply with the performance requirements of the Building Code of Australia (BCA). **OS'Brace® "H2 Blue"** is a termite treated structural sheathing panel to H2 level, registered in Queensland and New South Wales.



## EGGER EUROSTRAND® OSB

### Delivery Options

#### ■ STOCK PROGRAMME

We manufacture a broad range of formats and thicknesses for short-notice supply from our trade warehouse using state-of-the-art, efficient plants with online manufacturing. The range includes a wide variety of qualities including square-edged and tongue and groove boards that are tailored to the requirements of the various markets.

#### ■ CUT-TO-SIZE BOARDS

At our cutting plant we are able to meet customer-specific fixed format requirements with outstanding precision whilst taking the technical and economic feasibility into consideration.

#### ■ LOGISTICS

Thanks to the central location of the Wismar (Germany) site in terms of international trade routes, we supply our customers by road, rail or sea. In doing so, we can deliver combinations of different products such as EUROSTRAND® OSB and FORMline® DHF/DFF, within the same transport unit.



**Always up-to-date**

**EGGER | PRODUCT INFORMATION SERVICE online**

- The very latest, detailed product information at any time
- Quick and easy search using the EGGER product finder
- Technical information, data sheets and downloads
- Processing options and possible uses for all products



[www.egger.com](http://www.egger.com)